



# eZ-PostView™

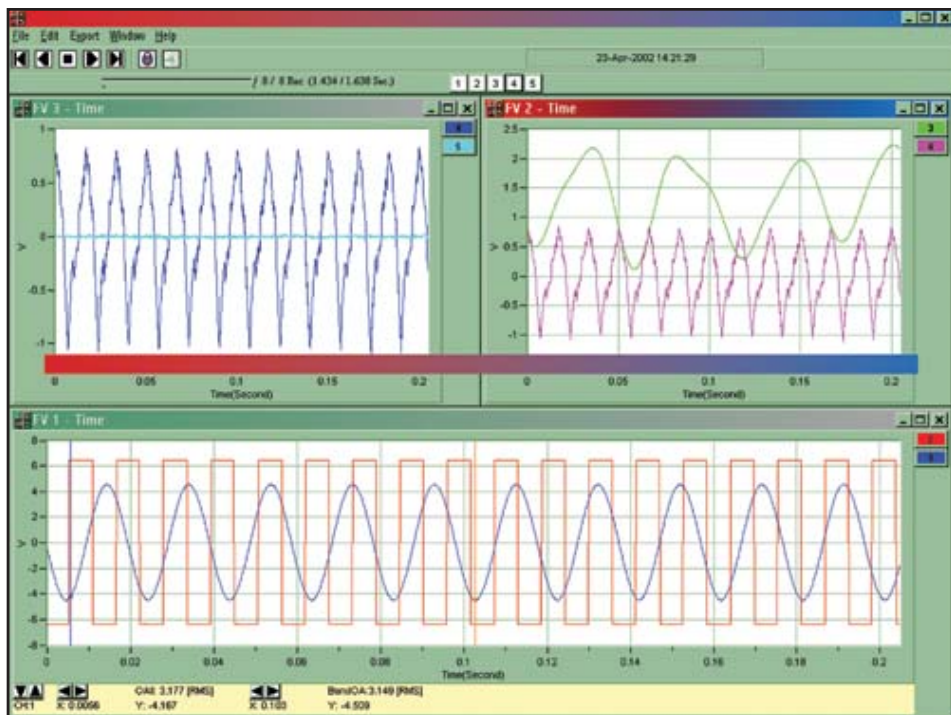
## General Information

### eZ-PostView™

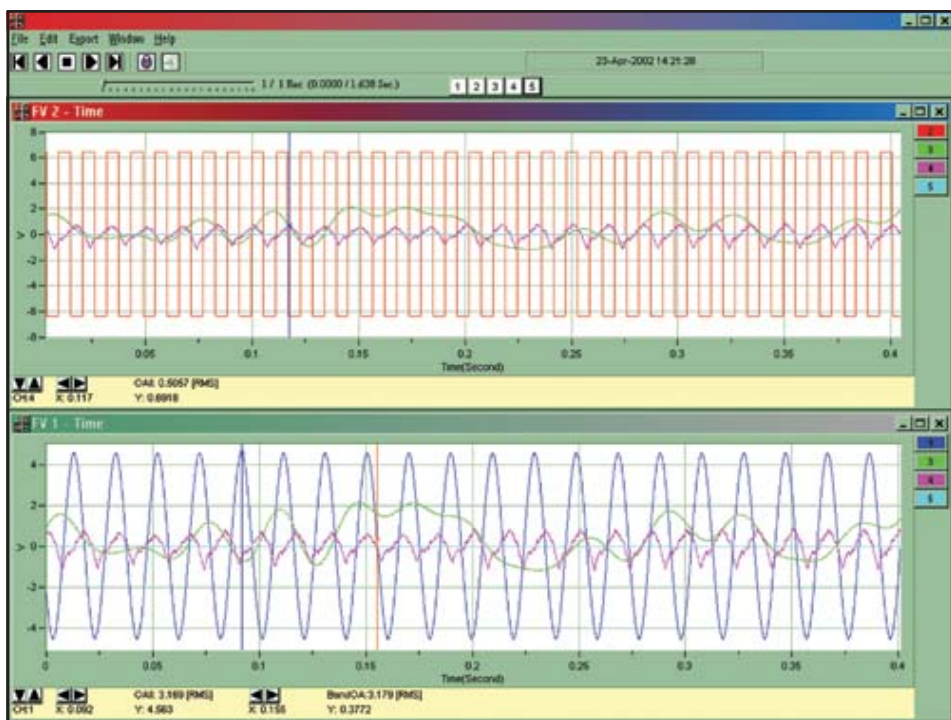
eZ-PostView™ is a time-domain post-acquisition data viewing package which is integrated and ready to use from within your View package when you install it. eZ-PostView provides easy to use basic time-domain data viewing for IOtech data acquisition View packages including DaqView™, WaveView™, Personal DaqView™, LogView™, and ChartView™.

### Features

- Up to 8 time domain function windows which can be tiled by the user for easy display customization.
- Up to 16 channel traces can be displayed in each time-domain function window.
- Single and band cursors to easily interpret individual data points.
- Window, trace, and cursor colors can be customized for user preference.
- Displayed data is automatically scaled to optimally fit function window.



*eZ-PostView allows you to view and tile multiple trace windows in any configuration you wish. Each window can contain up to 16 distinct channel traces.*



*eZ-PostView employs single and band cursors for easy display of individual data points. Cursors can also be locked when displaying multiple function views.*